



IKON™

Maximalist

LARGO COLLECTION



CONTENTS

LARGO COLLECTION

DOORS	4
INFINITY SLIDING™	5
ROMA FOLDING™	7
NERO HINGED™	8
PIATRA PIVOT™	9
WINDOWS	10
NOVA™ - AWNING	11
NOVA™ - TILT AND TURN	12
SKYLIGHT	13
SKYVIEW	13
CURVE AND ARCH PRODUCTS	14
INSTALLATION METHODOLOGY	16
POWDER COATING	17
PERFORMANCE GLASS	18
PORTFOLIO	20
CONTACT	36



Largo Collection — Maximalist

In a world where design often pursues restraint, the Largo Collection embraces abundance, bold lines, expansive forms, and architectural presence that commands attention.

Where minimalism finds beauty in simplicity, we celebrate richness in scale, detail, and depth.

Every frame in the Largo Collection is a deliberate act of strength and expression, balancing precision engineering with grandeur. These are not quiet forms; they are statements, windows and doors that frame life in its fullest dimension.

“Learn the rules like a pro, so you can break them like an artist.” — Pablo Picasso

In this spirit, the Largo Collection transforms architecture into an art of generosity: broader openings, commanding profiles, and the power of design that refuses to whisper.



DOORS

LARGO COLLECTION

Infinity Slider™

Our Infinity Slider™ offers flawless operation, high weather resistance, and an attractive design for easy retraction of sliding doors and windows. They can be made up to 3.5 meters high, providing unparalleled panoramic views. The four-point lock ensures maximum security.

Main advantages:

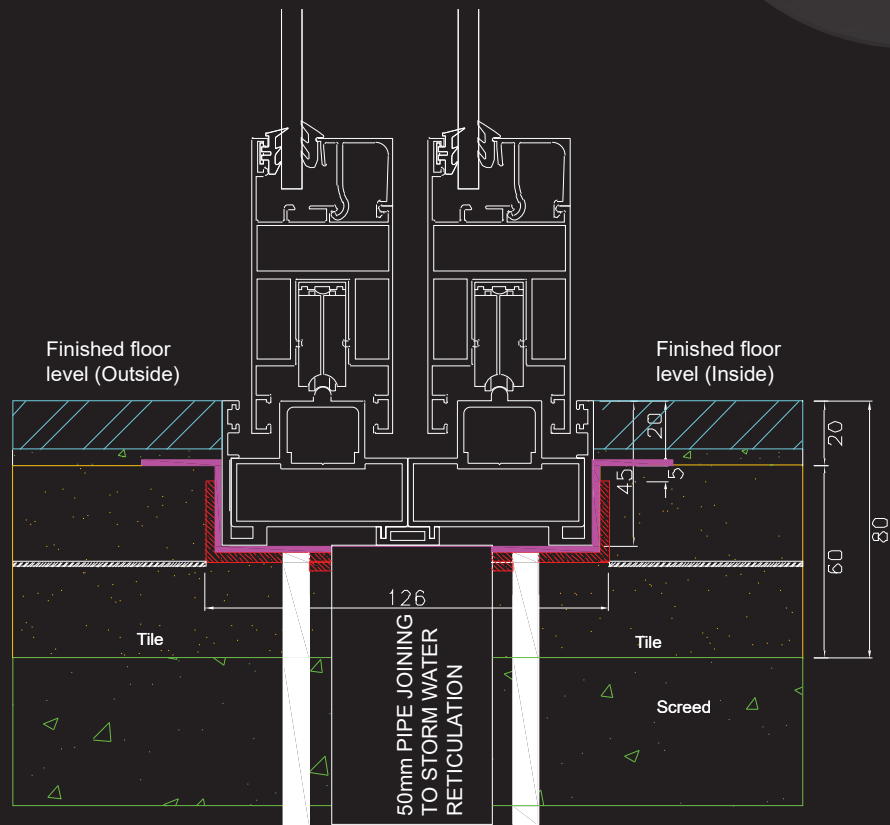
- Convenient and effortless operation with innovative closing motion and heavy-duty rollers supporting up to 300kg per panel.
- The 4-point locking mechanism ensures ultimate security and peace of mind.
- Stainless steel tracks maintain their appeal longer than standard powder-coated tracks.
- Large sliding panels up to 3.5 meters high offer superior panoramic views.
- 93mm Doorstyle sight line.
- Modular Frame allows for infinite sliding panels with various sliding directions.
- Drainage channels in the sill direct water outside, preventing water accumulation.
- EPDM Gaskets minimize shrinkage, ensuring maximum resistance against air and weather infiltration.
- Sliding panels stack flush when opened in a single direction, providing a maximum opening and sleek aesthetic.



LARGO COLLECTION

Infinity Flush Sill

With our innovative subsills and installation methodology we are able to achieve flush floor levels with our Infinity Slider™ creating a blur between indoors and outdoors of a home.



LARGO COLLECTION

Roma Folding™

Our Folding Stacking Door combines convenient operation, high burglar resistance, and heavy-duty hinges with an attractive design. The handle design complements any premium home. European locks and fittings ensure maximum security and a premium aesthetic for your home or commercial building. The system's gaskets and closed unit lever bolt offer superior air and weather resistance.

Main advantages:

- Easy operation with minimal effort
- Heavy-duty hinges and European locks and fittings
- High aesthetic appeal with premium hardware
- 3-point locking mechanism for ultimate security
- High air and weather resistance due to gaskets and closed unit rotary bolts
- Stainless steel track maintains its appeal longer than standard powder-coated tracks
- Large sliding folding panels up to 3.2 meters high
- Drainage channels in the sill direct water outside, preventing water accumulation



LARGO COLLECTION

Nero Hinged™

Our Hinged Door delivers seamless operation and exceptional burglar resistance. Equipped with durable, heavy-duty hinges, the door's sleek design is perfectly complemented by a sophisticated handle, suitable for the most luxurious homes or commercial buildings. Featuring European-designed locks and fittings, it ensures maximum security and an unparalleled premium aesthetic for your upscale property.

Main advantages:

- Convenient and easy operation with little effort
- Heavy duty hinges and European design locks and fittings
- High aesthetic appeal with premium hardware
- The 3 point Locking mechanism provides the ultimate security barrier
- High Air and weather resistance due to gasket and closed unit rotary bolts
- Large door panels can be achieved of up to 1.4 meters wide and 3.5 meters high
- Drainage channels with weeping holes in the sill were designed to direct water flow that gathers within the system to flow directly to the outside which ensures that water isn't trapped within the sill



LARGO COLLECTION

Piatra Pivot™

Our Pivot Door is designed for luxury homes that are looking for a wow factor when receiving someone into their home. With its Italian 3 point multi locking system, the heavy duty floor spring with a 90 degree hold open function and soft closing mechanism.

Main advantages:

- Convenient and easy operation with little effort
- Heavy duty floor spring with 90 degree hold open function to ensure the door isn't slammed closed by the elements
- The floor spring performs a soft closing function
- High end aesthetic appeal with premium 3 point multi lock
- Large door panels can be realised of up to 2 meters wide and 4 meters high
- This pivot door includes a drop seal designed to deliver optimal weather resistance at your entrance, thereby ensuring the highest level of comfort within your home.





WINDOWS

LARGO COLLECTION

Nova™ - Awning

The outward opening function frequently offers substantial benefits such as efficient ventilation and no disturbing sash in the room. With its large sash formats and optimised functions the Largo Nova delivers a premium finish that compliments luxury homes and commercial spaces.

Features:

- High performance multi-chamber system in symmetric design, quality assured weather chambers ensure top performance against weather conditions
- Corner and butt joint connection technology for high rigidity of frames

Fittings:

- Lateral application for side-hung opening
- Longitudinal application for top-hung opening
- Sash weight: up to 45 kg
- Sash formats (w x h): up to 1700 mm x 1700 mm



LARGO COLLECTION

Nova™ - Tilt & Turn

This window is effectively three windows in one: it serves as a fixed window, an in swing casement window and a hopper window. So in one configuration, you have a flexible window that swings as you would expect. This orientation also allows for easy cleaning on both sides of the glass while doubling as a good exit window in emergencies.

In the other configuration, the tilt allows in breezes, helps deflect rain and locks into place against potential intrusions. Heat escapes through the top and air enters and exits around the edges, facilitating draft-free ventilation. In other words: you can leave the window open when you are away without worrying too much about security or the weather. When you switch back to the locked position, you can also feel the multi-point locking mechanisms click into place (4 point locks). This provides further security and a completely air-tight weather seal. When the window is in this closed position, you are also left with an uninterrupted view through a single pane of glass, versus something like a traditional two-piece sash window which may split your view down the center.

Fittings:

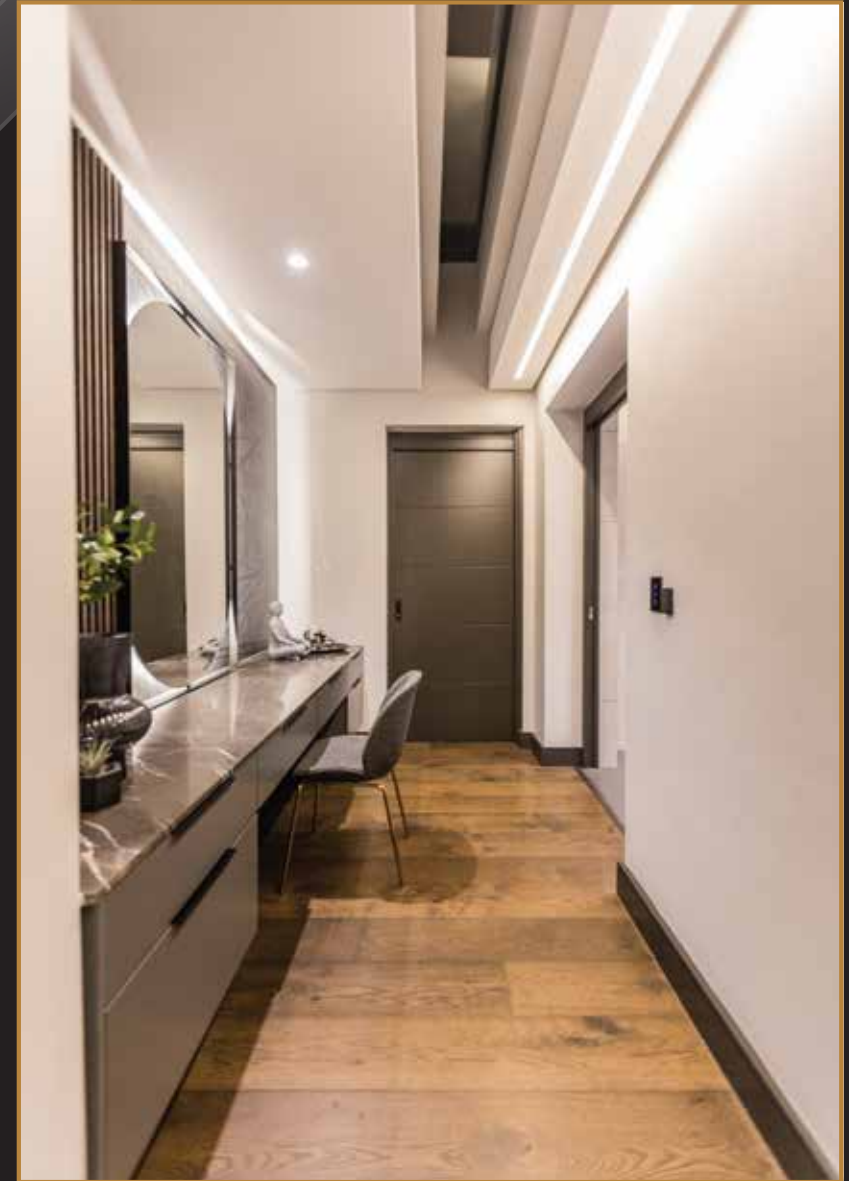
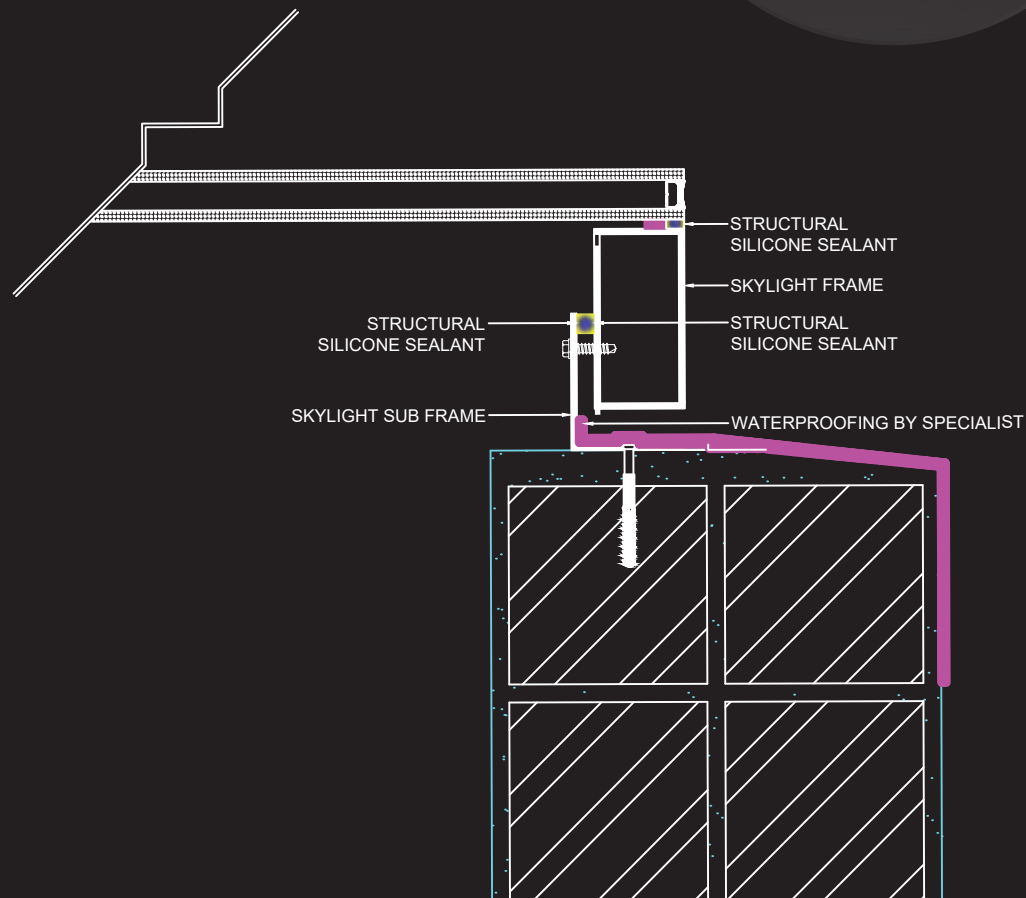
- Sash weight: up to 130 kg
- Sash formats (w x h): up to 1700 mm x 3000 mm



LARGO COLLECTION

Skyview

In addition to providing natural lighting all day long, thereby saving on electricity costs, a skylight enhances the aesthetic beauty and value of a property. More light in your home means a healthier outlook on life, as sunlight increases the efficiency of the heart.



CURVE AND ARCH WINDOWS

The lines of curve and arch soften a space, create interest and make a statement. Whether they are doorways, windows and archways or purely external or internal design features that are incorporated into the plans of a home with purpose and design sensibility.

In order to achieve the best possible finish, we have sourced the purpose made machinery to ensure that the arched and curved windows and doors are manufactured at an International level.



CURVE AND ARCH WINDOWS



INSTALLATION METHODOLOGY

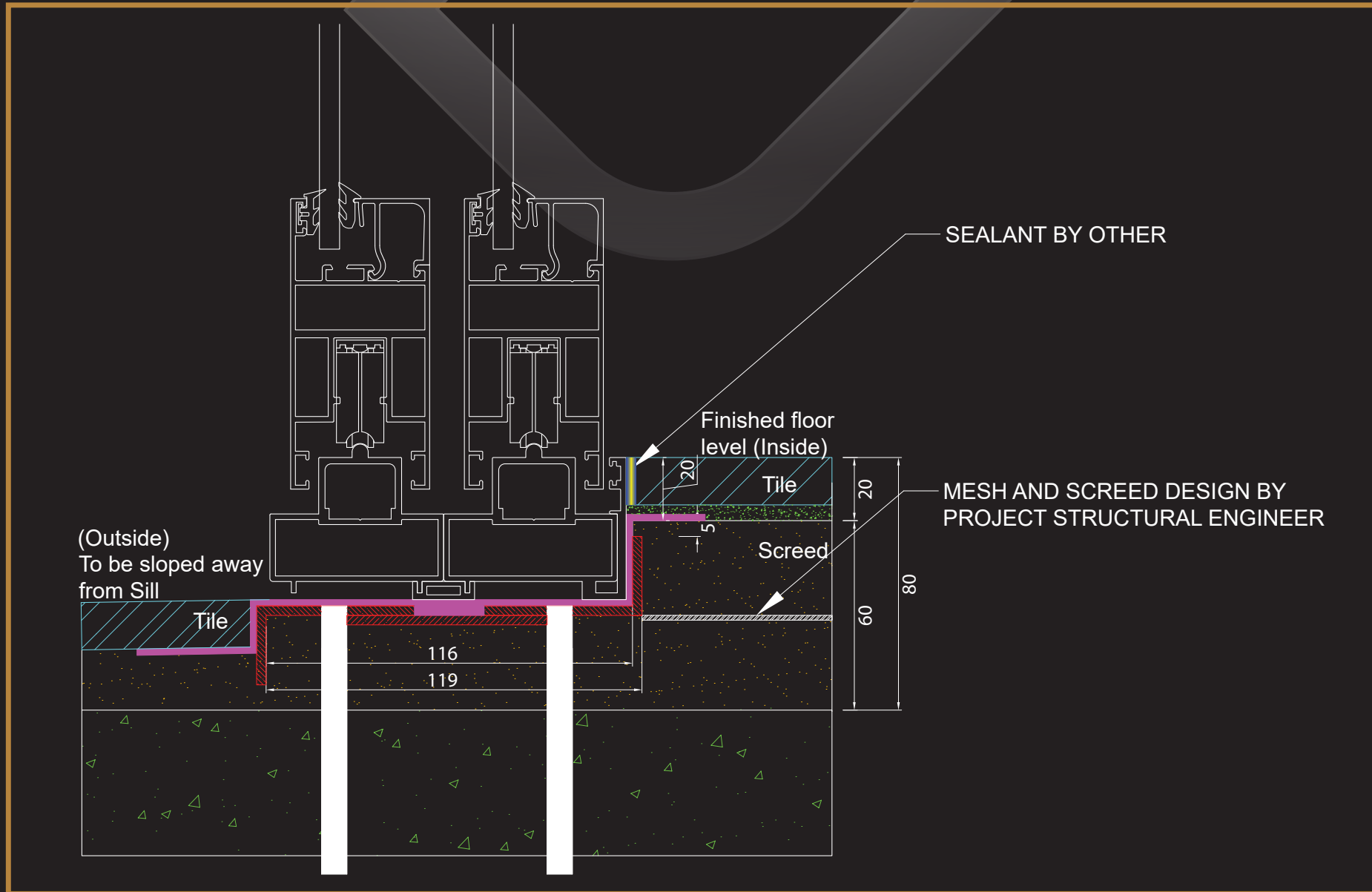
IKON recommends best practice of installation methodologies to ensure that our products perform optimally without any unnecessary stress or friction on the hardware and aluminium profiles.

This will ensure that our products perform BEST without unnecessary and frequent maintenance. In addition to this, leaking issues are also prevented.

These methodologies are based on International standards which are considered to be best practice around the world.



INSTALLATION METHODOLOGY



POWDER COATING



We pride ourselves in offering the best product and highest level of care when the application is done. To add more value and a longer lifespan to your product, IKON has partnered with QUALICOAT licenced applicators to bring you a more durable powder coating which has a 15-25-year warranty against fading and peeling.

QUALICOAT is a quality label organisation committed to maintaining and promoting the quality of coating on aluminium and its alloys for architectural applications.

To determine whether or not a coating meets a customer's requirements, the results need to be measurable against technical specifications. Working on behalf of customers who have their products coated, QUALICOAT defines comprehensive quality requirements and monitors their compliance by licensed plants worldwide. This gives purchasers of coated aluminium the assurance that they will receive a premium-grade product delivering long-term value and consistent quality.

QUALICOAT's mission is to provide best practice rules to obtain a good quality coating on aluminium.

To achieve this goal, QUALICOAT is committed in particular to:

- Establishing specifications for processes, products and tests to be used by the coating plants
- Developing and improving these specifications
- Granting licenses to coating plants that apply for the quality label
- Testing and approving chemicals and coating products to be used
- Monitoring the correct application of the specifications in licensed plants





Performance Glass

THE BENEFITS OF PERFORMANCE GLASS FOR LUXURY HOMES

In today's luxury home market, discerning homeowners expect not just opulence but also innovation. They seek spaces that are not only aesthetically captivating but also functional and efficient. This expectation has given rise to the widespread use of performance glass in high-end homes. Performance glass, whether single or double glazed, is designed with an emphasis on maximizing comfort, energy efficiency, and aesthetic appeal. Here are the unparalleled benefits that such glass brings to luxury residences:

Enhanced Thermal Comfort: High-performance glass is crafted to regulate indoor temperatures. Whether it's the scorching heat of summer or the freezing chill of winter, these glass act as barriers. Double glazed windows, for instance, contain two layers of glass separated by a gap filled with air or inert gas. This design insulates the home from external temperatures, ensuring that the living spaces remain comfortable all year-round.

Noise Reduction: Luxury means tranquillity. Performance glass, especially the double-glazed variety, significantly reduces noise infiltration. Whether it's the hum of city traffic, the roar of an airplane, or even just neighbourhood noises, performance glass provides residents with a serene and peaceful indoor environment.

Energy Efficiency and Cost Savings: Performance glass can significantly reduce energy bills. By maintaining a consistent indoor temperature, there's less need to rely heavily on heating and cooling systems. This not only saves homeowners money in the long run but also contributes to a greener environment by reducing carbon footprints.

UV Radiation Protection: Ultraviolet (UV) rays from the sun can be harmful and can fade and deteriorate furnishings, artworks, and fabrics. Performance glass is often treated to filter out a significant portion of these harmful rays, thereby protecting the valuable interiors of luxury homes.

Aesthetic Versatility: Modern luxury is as much about elegance as it is about customization. Performance glass comes in a variety of tints, textures, and finishes. Whether homeowners want a clear, uninterrupted view of their sprawling gardens or a tinted version to provide a little privacy without compromising on natural light, there's a performance glass to suit every need.

	Single Standard	Single Basica	Single Ultima	Single Exclusiva	Single PrimaVista	Double Standard	Double Basica	Double Ultima	Double Exclusiva	Double PrimaVista
Visible Light %	89	83	47	43	67	80	73	42	38	60
U-Value	5.2	3.7	5.8	3.7	3.3	2.8	1.9	2.7	1.9	2.2
Solar Heat Gain Coefficient %	82	70	54	43	58	71	62	42	35	50



PORTFOLIO

RESIDENTIAL STAND 341 - RYNFIELD ESTATE

SYSTEM

- Largo Infiinty Sliding™ door
- Largo Nova™ windows
- Largo Nero Hinged™ doors
- Largo Nero Louvre™ doors

COLOUR

- Qualicoat class 2
Velura Graphite

GLASS

- Double Glazed Units,
Premium insulation
properties



RESIDENTIAL
STAND 341 - RYNFIELD ESTATE



RESIDENTIAL RIVERS EDGE

SYSTEM

- Largo Infinity Sliding™ door
- Largo Nova™ windows
- Largo Nero Hinged™ doors

COLOUR

- Qualicoat class 2
Velura Umber

GLASS

- Single Basica



RESIDENTIAL
RIVERS EDGE



RESIDENTIAL HOUSE B - BIRDHAVEN

SYSTEM

- Louvre fixed windows
- Largo Infiity Sliding™ doors
- Largo Nero Hinged™ double & single doors
- Largo Infinity Cavity Sliders™
- Largo Nova™ windows

COLOUR

- Qualicoat class 1
Velura Onyx

GLASS

- Double Basica



RESIDENTIAL HOUSE B - BIRDAHVEN



RESIDENTIAL HOUSE C - MEYERSDAL ECO ESTATE

SYSTEM

- Largo Infinity Sliding™ door
- Largo Nova™ windows
- Largo Nero Hinged™ doors

COLOUR

- Qualicoat class 1
Velura Onyx

GLASS

- Low Emissivity glass



RESIDENTIAL HOUSE C - MEYERSDAL ECO ESTATE



RESIDENTIAL ATRUIM HOUSE - RYNFIELD ESTATE

SYSTEM

- Largo Infinity Sliding™ door
- Largo Nova™ windows
- Largo Nero Hinged™ doors

COLOUR

- Qualicoat class 2
Velura Umber

GLASS

- Low Emissivity glass



RESIDENTIAL
ATRUIM HOUSE - RYNFIELD ESTATE



RESIDENTIAL BLACK HOUSE - RYNFIELD ESTATE

SYSTEM

- Largo Infinity Sliding™ door
- Largo Nova™ windows
- Largo Nero Hinged™ doors

COLOUR

- Qualicoat class 2
Velura Graphite

GLASS

- Low Emissivity glass



RESIDENTIAL
BLACK HOUSE - RYNFIELD ESTATE



RESIDENTIAL ALOE HOUSE - EBOTSE GOLF ESTATE

SYSTEM

- Largo Infinity Sliding™ door
- Largo Nova™ windows
- Largo Nero Hinged™ doors
- Largo Nero Louvre™ door

COLOUR

- Qualicoat class 2
Velura Graphite

GLASS

- Double Glazed Units,
Premium insulation
properties



RESIDENTIAL
ALOE HOUSE - EBOTSE GOLF ESTATE



CONTACT US

HEAD OFFICE

Tel:

+27 (0)11 524 0648

+27 (0)11 026 2063

Email:

info@ikonalu.co.za

Physical Address:

**21 Cardiff Avenue, Apex,
Gauteng, South Africa**

www.ikonalu.co.za

KAMERVILLE

Tel:

+27 11 026 2063

Physical Address:

**14a Kramer Rd, Kramerville,
Sandton, 2090**

CAPE TOWN

Tel:

+27 21 300 5775

Physical Address:

**Block 1 Unit 8, Northgate Business Park,
Gold Road, Brooklyn, Cape Town, 7405**

